

SYSTEM SOLUTIONS

AN INDIVIDUAL APPROACH

ON-LINE ORDERING

FLEXIBLE PRICING POLICY

Individual solution for you

# DOORHAN CZECH REPUBLIC PRODUCTION

DoorHan Czech Republic uses modern automated production lines to fabricate components for sectional doors. All the components are manufactured using high quality and environmentally friendly materials from leading global suppliers. Thanks to a wide range of colours and designs, DoorHan sectional doors can meet even the most demanding customer needs.



## PRODUCTS production

- residential and industrial sectional doors
- sectional door sandwich panels and components
- operators
- loading equipment
- rolling shutter components
- steel entrance doors

## EQUIPMENT AND CAPACITY

- sandwich panels production line
- residential sectional doors assembly line
- roll former machines and bending machines
- automated panel warehouse

350 sectional doors per day

16 000 m<sup>2</sup> total area of the plant



12 000 m sandwich panels per day

15 tonnes of steel profile per day

From a small installation company, DoorHan has become one of the world's leading manufacturers of sectional doors. In 2010 the company has started its production in Europe. We are now delivering to European countries, North Africa, South America and the Middle East.

[www.doorhan.com](http://www.doorhan.com)



# INDUSTRIAL SECTIONAL DOORS ISD01

**DOORHAN®**



DoorHan industrial sectional doors are an ideal business solution. Robust guides are designed to lift large door leaves and to withstand high intensity use. The torsion spring mechanism is designed for up to 25 000 full cycles. DoorHan industrial sectional doors are made of sandwich panels, steel-polyurethan-steel, which ensure high thermal insulation and maximum safety of the premises.

#### INSTALLATION REQUIREMENTS

Opening height – from 2000 to 6120 mm

Opening width – from 1700 to 8000 mm

Room depth – door leaf height + 500 mm

Minimum lintel height – 150 mm

Minimum side space – 120 mm

# PASS DOORS

Industrial sectional doors ISD series can be supplied with pass doors to ensure an additional entrance to the building, without having to open the entire door. Double sealing system provides the door with great thermal insulation properties, retaining warmth in winter and cold in summer. The pass door is equipped with a built-in closer, open pass door sensors and retainer. Standard frame colour is silver.

# SIDE ENTRANCE DOORS

Side entrance doors can be installed in the openings with sufficient width. These doors can be installed as an alternative entrance possibility from the sectional doors, while retaining the same design and thermal insulation properties.

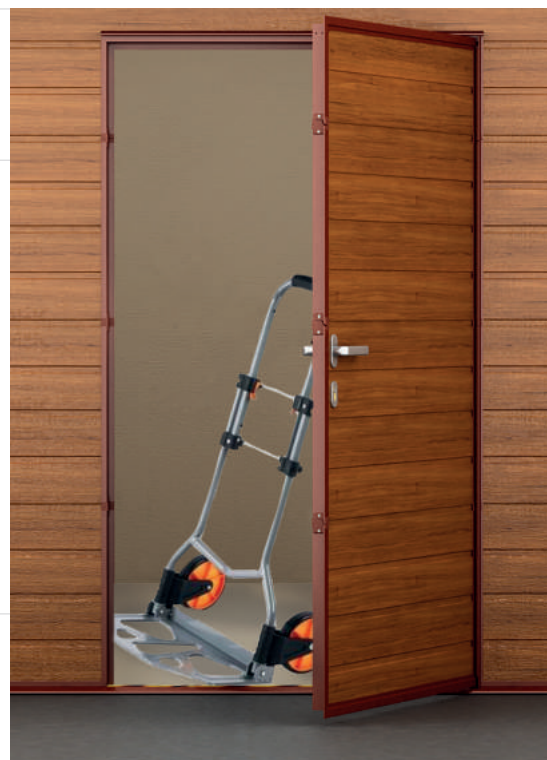


## PASS DOORS

Pass doors always open to the outside, either DIN left or DIN right. The pass door can also be positioned to the center or closer to the sides.



High step 75 mm  
+ bottom seal /



Low step  
25 mm /

Standardly, the pass door profiles are powder-coated in RAL 9006 (white aluminum). On request, these profiles can be adapted to match the door leaf colour. The pass door is equipped with a profile cylinder lock, knob cylinder, light metal handles, overhead door closer and a safety door sensor, which stops the operator when the pass door is open.



## V4 ST SERIES HIGH STEP

### PASS DOOR DIMENSIONS

Standard width – 900 mm

Standard height – 1800/1900 mm (depends on the height of panels)

Step height – 75 mm (without sealing)

Minimum distance from the pass door  
to the edge of door leaf – 400 mm



## V5 ST SERIES LOW STEP

### PASS DOOR DIMENSIONS

Standard width – 900 mm

Standard height – 1800/1900 mm (depends on the height of panels)

Step height – 25 mm (without sealing)

Minimum distance from the pass door  
to the edge of door leaf – 400 mm





## SIDE DOORS

### SINGLE DOOR LEAF



Single door leaf /

Side entrance doors are produced in standard design, but also according to customer requirements. These doors feature a robust construction, simple and easy installation and the optimal price-quality ratio. The door leaf is made of sandwich panels and the frame is made of aluminum profiles, which are powder-coated in RAL 9010 (pure white). Panel surface is available in Woodgrain, Stucco and Smooth. On request, side doors are available in other colours, according to RAL chart.



Sectional door with side entrance door /

Side doors are an optimal entrance solution. These doors are custom made with possibility of opening inside or outside, DIN left or DIN right. Side doors are equipped with a very low step, of only 16 mm, creating no obstacle.

### DIMENSIONS OF PANORAMIC PANEL

Opening height from 1500 mm to 2500 mm

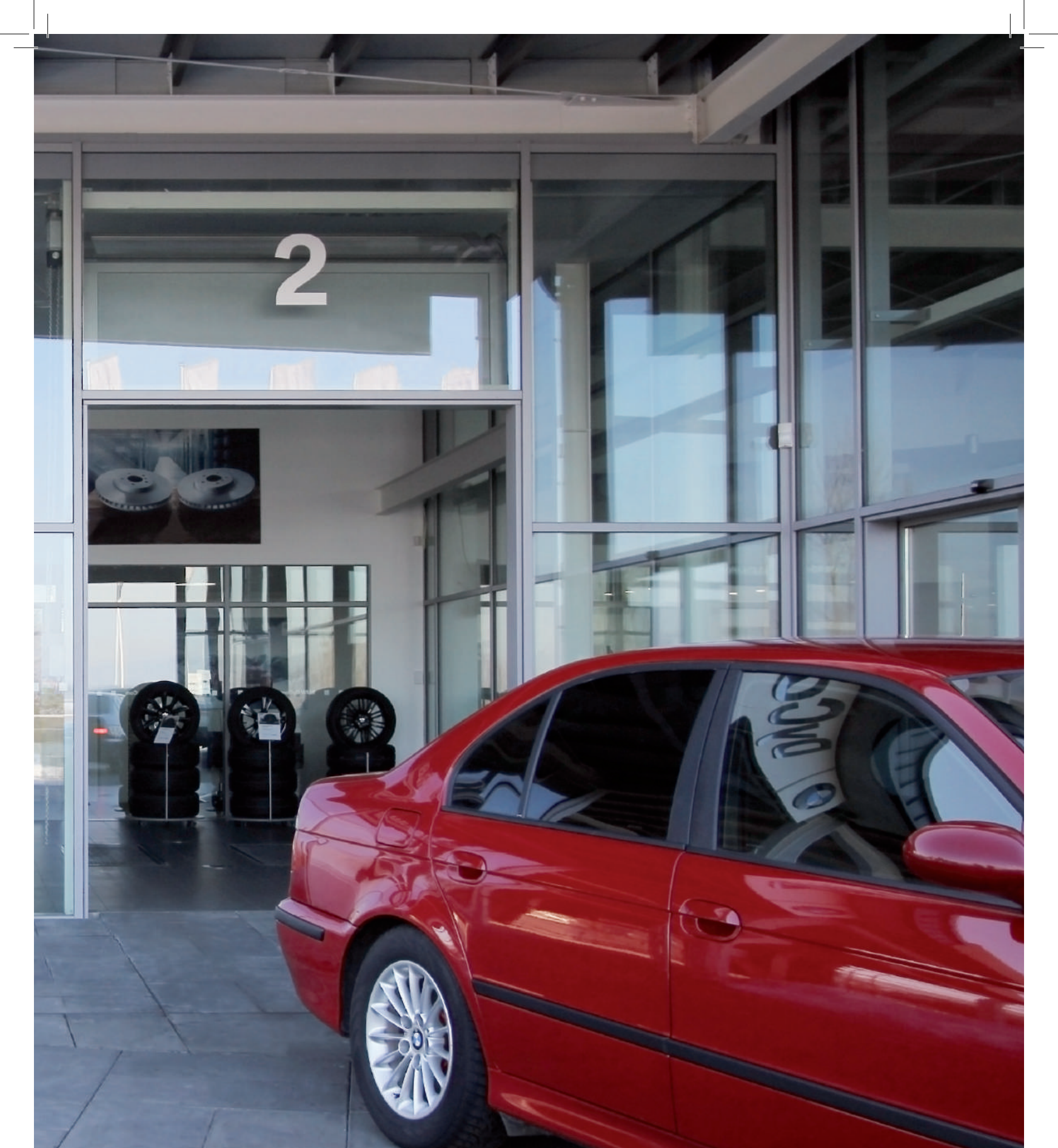
Opening width from 500 mm to 1500 mm

Door leaf width from 300 mm to 1300 mm

Door thickness including frame 45 mm



## INDUSTRIAL SECTIONAL DOORS ISD02



2

Industrial sectional doors ISD02 allow insertion of panoramic panels to the door leaf. Panoramic panels are made of impact-resistant polycarbonate. ISD02 sectional doors can be produced in full glazing as well as in any combination with standard sandwich panels. Door glazing ensure maximum visibility of the inner and outer space, which contributes to a better operation in busy areas.

#### INSTALLATION REQUIREMENTS

Opening height – from 2020 to 6120 mm

Opening width – from 2000 to 8000 mm

Room depth – door leaf height + 500 mm

Minimum lintel height – 150 mm

Minimum side space – 120 mm

# PANORAMIC DOORS

- Standard panoramic doors
- Standard panoramic doors with pass door
- Fully panoramic doors with width up to 3000 mm
- Fully panoramic doors with width from 3000 mm to 6000 mm
- Combined panoramic doors
- Combined panoramic doors with pass door





## PANORAMIC DOORS

### STANDARD PANORAMIC DOORS WITH ALUMINUM DIVIDERS

For doors with vertical lift and leaf width from 4500 to 6000 mm, the width of glazed section can be up to 900 mm. Standard panoramic doors can be produced with pass doors with width from 600 to 1500 mm and height from 1100 to 2500 mm.

#### GLAZING TYPES AND DIMENSIONS OF GALZED SECTIONS

Height: from 370 to 650 mm

Width: up to 600 mm

### FULLY PANORAMIC DOORS

Fully panoramic doors provide maximum lighting of inner spaces and a great panoramic view. Pass doors can not be installed on fully panoramic doors.

#### GLAZING TYPES AND DIMENSIONS OF GALZED SECTIONS

Height: from 370 to 650 mm

Width: up to 3000 mm

### COMBINED PANORAMIC DOORS

For doors with vertical lift and leaf width from 4500 to 6000 mm, the width of the glazed section can be up to 900 mm. Combined panoramic doors can be produced with pass doors with width from 600 to 1500 mm and height from 1100 to 2500 mm.

#### GLAZING TYPES AND DIMENSIONS OF GALZED SECTIONS

Height: from 370 to 650 mm

Width: up to 600 mm



## PANORAMIC PANELS



Panoramic panel with double glazing /  
plexiglass / polycarbonate



Panoramic panels with single glazing /  
polycarbonate



Panoramic panel with aluminum grille /  
Hole diameter – 6 mm.

DOORHAN

## DESIGN OPTIONS AND ACCESSORIES

**DOORHAN**<sup>®</sup>





*DOORHAN*

*DOORHAN*

PANEL TYPES



S-Line



V-Line

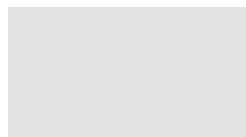


M-Line

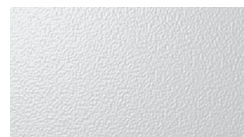


W-Line

SURFACE TYPES



Smooth

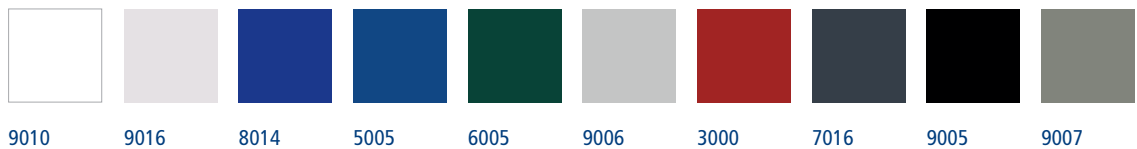


Stucco



Woodgrain

STANDARD RAL COLOURS



9010

9016

8014

5005

6005

9006

3000

7016

9005

9007

Panels can be painted in any colour from the international RAL Colour Chart.

Colour swatches printed on this page may not accurately display the original colours. Please use the original RAL Colour Chart.

WINDOWS

Windows can be integrated in sectional doors ISD01 series, which thanks to the special design seal tightly to the door leaf and protect it from freezing and heat loss.



Dimensions 638 x 338 mm  
Frame colour: black



Dimensions 588 x 181 mm  
Frame colour: black



Ventilation grille

# ACCESSORIES

## LOCK AND HANDLES

The dead bolt lock is made of stainless steel which increases its reliability. Ergonomically designed handles allows to open the door manually and also act as a decorative element.

- Handle for sectional doors ISD01 series
- Handle for sectional doors ISD02 series
- Lock for sectional doors ISD01 series



Lock for sectional doors ISD01 series



Handle for sectional doors ISD01 series



Handle for sectional doors ISD02 series



Catch

## OPERATORS FOR INDUSTRIAL SECTIONAL DOORS

Shaft operators are used to automate industrial sectional doors, where the demands on the frequency of their use and operation stability in different operating conditions are greater.

- High efficiency
- Ease of operation
- Wide accessory range

The industrial sectional doors open and close at the touch of a button on the remot control.

Operators are also equipped with built-in lighting, which turns on automatically when the motor is activated.

- SHAFT-20KIT
- SHAFT-30 IP65CEKIT/ SHAFT-60 IP65CEKIT
- SHAFT-50EN/KIT
- SHAFT-50PROKIT
- SHAFT-120KIT



SHAFT-20KIT



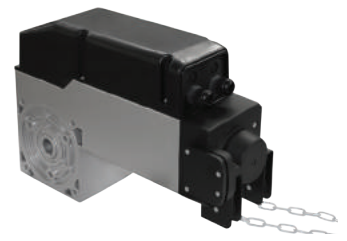
SHAFT-30 IP65CEKIT  
SHAFT-60 IP65CEKIT



SHAFT-50EN/KIT



SHAFT-50PROKIT



SHAFT-120KIT

MODEL	SHAFT-20	SHAFT-30IP65	SHAFT-50	SHAFT-60IP65	SHAFT-120
Supply voltage, V/Hz	230/50, 1phase	230/50, 1phase	230/50, 1 phase	400, 3 phases	400, 3 phases
Maximum power consumption, W	300	300	370	350	700
Torque, Nm	20	30	50	60	120
Shaft speed, RPM	25	32	24	32	22
Maximum door area, m2	12	18	2	28	40
Intensity, %	30	50	50	60	65
Temperature, °C	from -20 to +55	from -20 to +55	from -20 to +50	from -20 to +55	from -20 to +55
Degree of protection	IP20	IP65	IP54	IP65	IP44

## AUTOMATION ACCESSORIES

A wide accessory range provides a comfortable and a safe use of operators.

- Safety
- Modern design
- Convenient operation
- Wide application
- Easy programming
- Reliability

Remote controls, photocells, external receivers, keyboards and other automation accessories, allow a convenient and a safe door operation. All control devices are optimized to connect with DoorHan automation systems, but can also be combined with devices from other manufacturers. Remote controls are easy to program, within a few key presses, which saves time and provides safe and easy operation of all automation systems.



DHRE-1



GSM



Photocell-N



Optokit



SmartControl-2



Lamp



Lamp-LED



Lamp PRO



Keypad



Keyswitch\_N



Keycode



Button3

Button2K

## TRANSMITTERS



Transmitter 4 EX



TR 4-BLACK/CZ





## DOCKING SYSTEMS

*DOORHAN*<sup>®</sup>





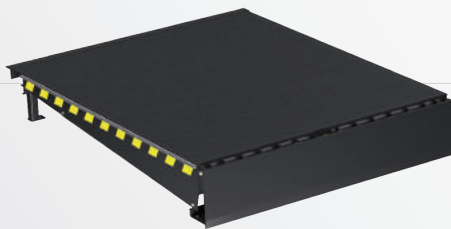
# DOCK LEVELERS

## WORKFLOW OPTIMIZATION

Electrohydraulic Dock Levelers provide a smooth and a quick movement of forklifts between warehouse and truck during loading and unloading operations. A wide model range of dock levelers allows to choose the best option for any object.



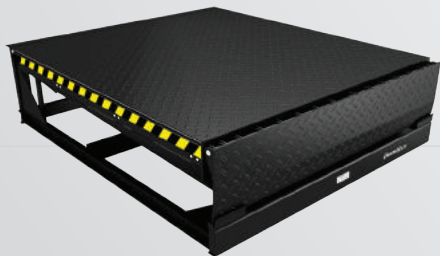
Electrohydraulic dock leveler with hinged lip /



Electrohydraulic console dock leveler /



Electrohydraulic dock leveler with telescopic lip /



Mechanical dock leveler with hinged lip /



Mechanical dock leveler mini /





## MECHANICAL FOLDING TRACKS

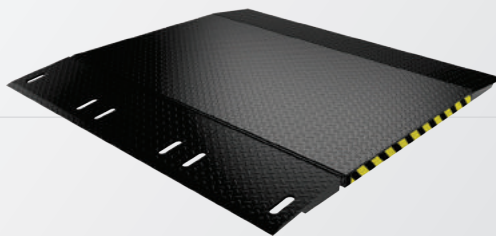
Mechanical Folding Tracks are intended for loading and unloading operations; are installed on open ramps, compensating the height difference between the truck and the dock of up to 360 mm.

### INDIVIDUAL APPROACH

Mechanical Folding Tracks can have a stationary or a sliding construction, while the Mobile Tracks are used for small loads.



Stationary folding track /



Mobile track /



Sliding mechanical folding track /



## DOCK SHELTERS

### ENERGY EFFICIENT

Dock Shelters are designed to provide maximum impermeability during loading and unloading, while maintaining the required microclimate of the facility.

### CONVENIENT OPERATION

During handling process the rear part of the truck or trailer may easily enter into the dock, thereby, making the operation simple and convenient.



Dock shelter with aluminum collapsible structure /



Inflatable dock shelter /



## DOCK HOUSES

### A COMPREHENSIVE APPROACH

Dock Houses represent a complex structure which permits to install dock levelers and dock shelters in front of the building, while providing thermal insulation between the building and dock equipment.

### CONVENIENT SOLUTION

Dock Houses are available in four adjunction angles — 90, 60, 45 and 30°; therefore, allowing to be installed in areas where perpendicular parking of the truck to the dock is not possible.



Dock house of standard series /



Dock house of light series /



## MOBILE RAMPS

The speed of loading and unloading is a key parameter to assess the activity of a warehouse. Mobile Ramps are the most effective solution which enables handling operations, particularly at warehouses that lack loading docks. DoorHan Mobile Ramps are designed to provide forklift access from the ground to the truck and do not require special preparation to launch.

### TYPE OF LOADING

- Unilateral loading – designed to work with one truck.
- Three lateral loading – designed to load and unload up to three trucks simultaneously and transfer goods from one vehicle to another.

### TYPE OF SUPPORT

Mobile Ramps without support on the vehicle, have their own support. Due to this, the weight of the ramp and forklift does not lie on the vehicle body. Height variations between the ramp and the truck are compensated by a hinged lip.

Mobile Ramps with support on the vehicle, completely follows truck height during loading and unloading operations.

### OPERATOR TYPE

- Manual hydraulic operator
- Jost lift mechanism
- Electro hydraulic operator

### CARRIAGEWAY MATERIAL

- Galvanized grille.
- Expanded metal sheet.



Mobile ramps of RM series with support on truck /



Mobile ramps without support on truck /



Mobile ramps with three lateral load /



Mobile ramps without upper horizontal platform /



## LIFT TABLES

Modern hydraulic lift tables are used to lift and to lower loads at different levels. Lift tables ensure a quick and convenient vertical load transfer, are reliable and easy to maintain. Lift tables can be used to lift and lower vehicles at multilevel parkings and at production lines, for order picking, work positioning and assembly as well as an alternative of freight elevators or stationary ramps to load and unload trucks.



Tandem scissor lift /



Single scissor lift /



Double scissor lift /



Triple scissor lift /

# ACCESSORIES

## WHEEL GUIDES

Designed to minimize possible contact with the truck wheel rim, these accessories provide a guided and accurate truck parking at the dock. A choice of two types of installation is provided — by using anchor bolts or concreting.



## GUARDS

Guards are designed to be installed indoor to prevent possible wall damages made by forklifts or pallets; also to ensure their correct and safe movement within the storage facility and near the dock.



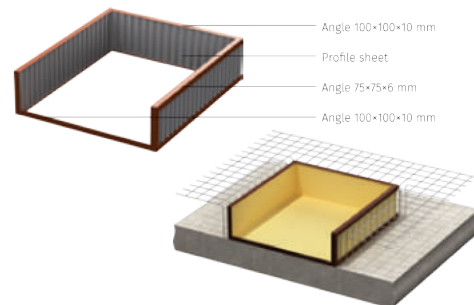
## PROTECTION BOLLARDS

Shock columns are intended for indoor use, designed to protect vertical tracks of the doors from damages that may be caused by forklifts and pallets during operation.



## FRAME FOR CONCRETING

Ensures proper installation of the dock leveler. The frame for concreting is manufactured according to the dock leveler dimensions.



## RUBBER BUMPERS

Provide a secure entrance of the trucks to the loading site and prevent the facility walls from damage, acting as a bumper. These accessories are made of a solid technical rubber, which increases their durability.

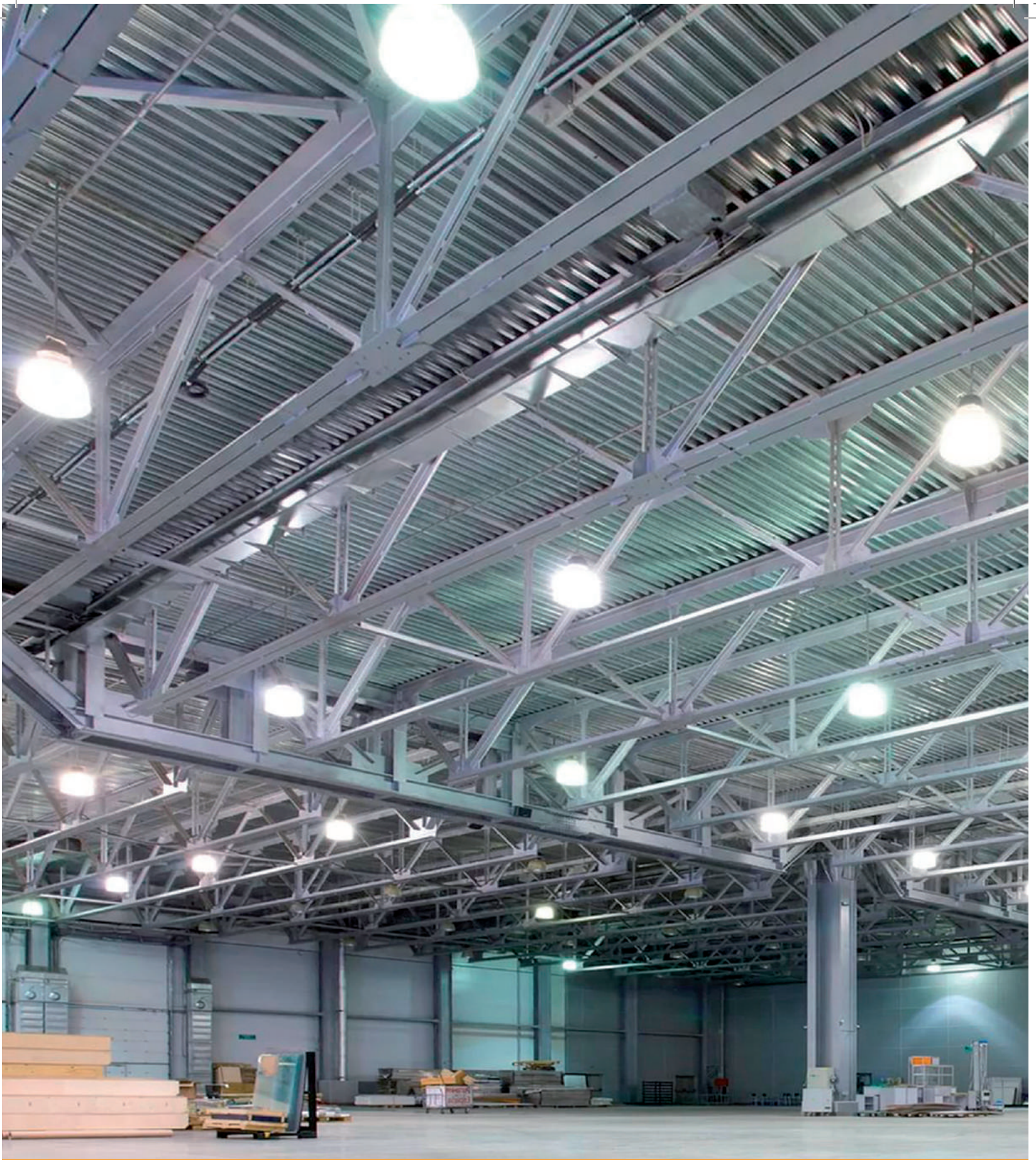




# HIGH SPEED DOORS

**DOORHAN®**





Design: door structure is made of galvanized steel; drive shaft – galvanized steel D=90/130 mm; truck guides – extruded polyethylene.  
Curtain: light-proof reinforced PVC, 900 g/m<sup>2</sup> density.  
Vision panels: 1 mm thick transparent PVC.

#### DIMENSIONS

Width – from 2000 to 6000 mm

Height – from 1800 to 5800 mm



## SPEEDROLL SDI

Application: universal – indoor openings in industrial storage and commercial facilities.

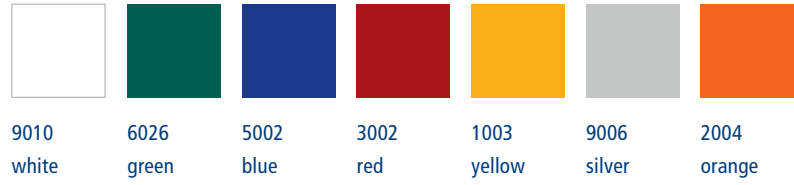


## SPEEDROLL SDO

Application: universal – for outdoor openings in industrial storage and commercial facilities.

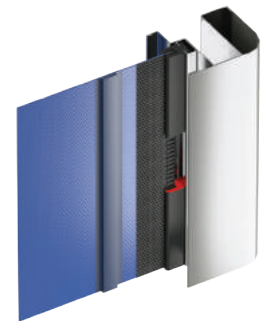
# DESIGN AND ACCESSORIES

## STANDARD COLOURS

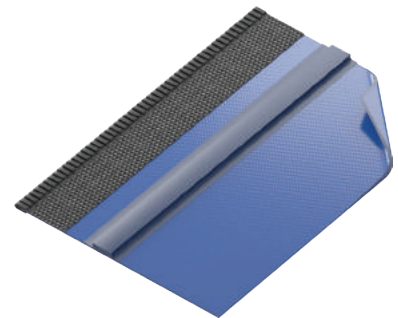
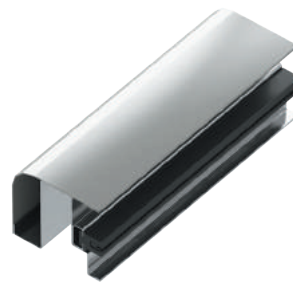


## FEATURES

Unique door design provides high traffic throughput capacity while minimizing heat loss. Door curtain is made without any rigid pieces, making them safe for use by equipment and staff. DoorHan high-speed doors are self-repairing, meaning that if door curtains comes off the track (for example, in case of impact with a forklift) the system will automatically guide the curtain back into the track on the next cycle.



Door frame is made of galvanized steel and can be optionally manufactured of stainless steel and painted into any color according to RAL colour chart. Modular design provides a convenient and easy replacement of the components. Door curtain is made of PVC with polyester fabric (900-1200 g/m<sup>2</sup>) with transparent parts to provide better visibility.



## WINDOWS





***DOORHAN***<sup>®</sup>

Královský Vrch 2018  
432 01 Kadaň  
Czech Republic

phone / +420 474 319 111  
e-mail / kadan@doorhan.com

Contacts

[www.doorhan.com](http://www.doorhan.com)